

Simongarden URBAN TOP MOBILE

96.5 x 90 x 60 cm
38.0" x 35.4" x 23.6"



75 kg
(165 lb)

120
KG

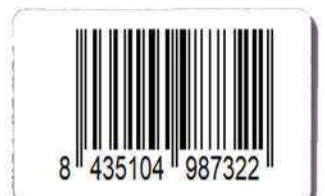
CAPACITÀ TOTALE DELLO SCAFFALE
CAPACITÄ TOTAL DE L'ESTANTERIA
CAPACIDAD TOTAL DE LA ESTANTERIA
CAPACIDADE TOTAL DA PRATELEIRA
CAPACITY TOTAL LOAD SHELF
CAPACIDADE TOTAL



Carga uniformemente repartida
Evenly distributed load
Gleichmäßig verteilte Last
Charge uniformément répartie
Carga uniformemente distribuida



*MEDIDAS EN USO USED MEASUREMENTS
MASSNAHMEN IM EINSATZ MESURES EN EMPLOI MEDIDAS EN USO:
950 x 910 x 61 mm (37.40" x 35.8" x 24.01")

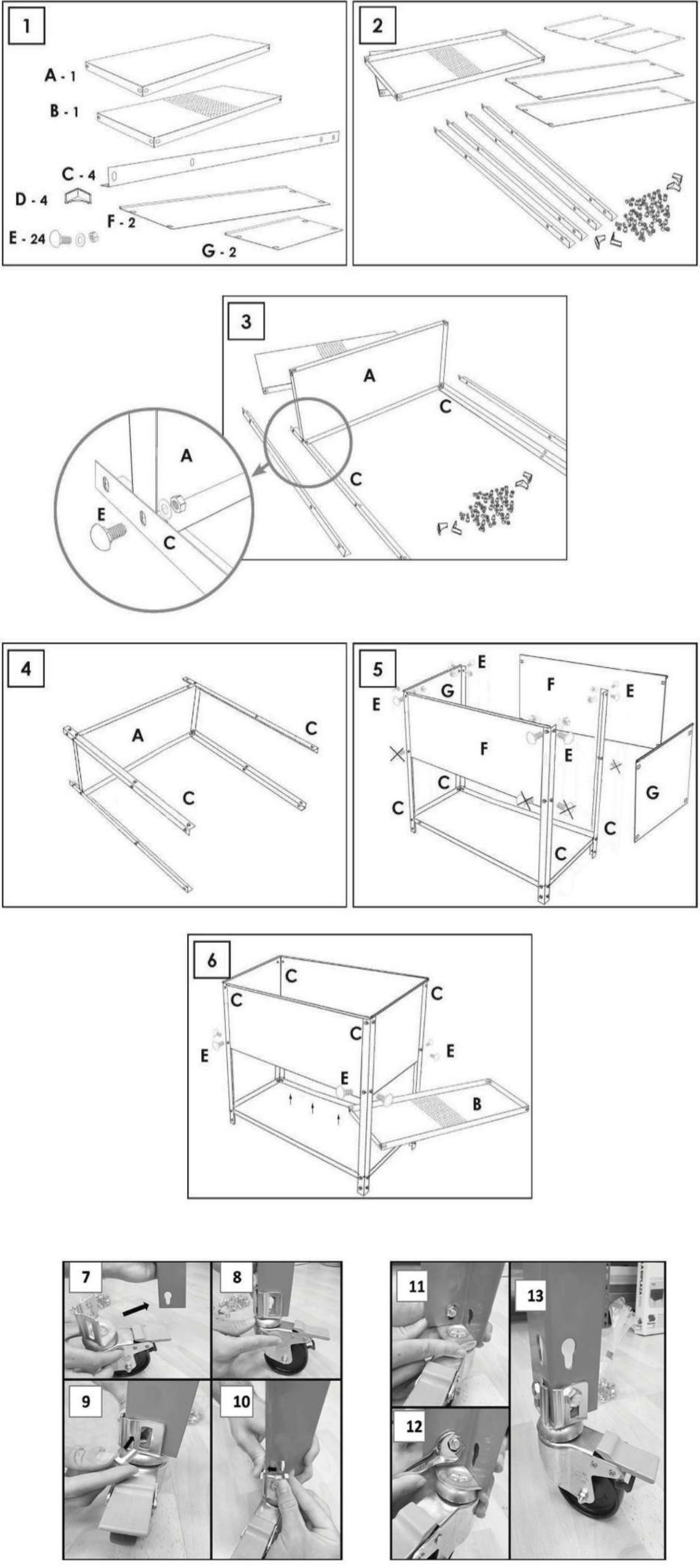


ESTANTERIAS SIMON S.L. B.50.556.463
PG. ALFAMEN C/ POLIGONO C, Nº3
ALFAMEN (ZARAGOZA)



info@simonrack.com
www.simonrack.com
Telf. (+34) 976 628 537
Fax (+34) 976 628 542





www.simonrack.com • www.simonrack.com • www.simonrack.com • www.simonrack.com • www.simonrack.com • www.simonrack.com • www.simonrack.com • www.simonrack.com • www.simonrack.com • www.simonrack.com

SIMONCLASSIC

BOLTS SYSTEM

Up to: **150 Kg** (331 lb)
Kg/Shelf
LxPxH: 1200x600x1800 mm



SIMONCLICK

NO BOLTS SYSTEM

Up to: **400 Kg** (882 lb)
Kg/Shelf
LxPxH: 1200x600x1800 mm



SIMONOFFICE

NO BOLTS SYSTEM

Up to: **275 Kg** (606 lb)
Kg/Shelf
LxPxH: 1200x600x1800 mm



SIMONTALLER

NO BOLTS SYSTEM

Up to: **700 Kg** (1543 lb)
Kg/Shelf
LxPxH: 1200x600x1800 mm



BANCOS DE TRABAJO WORK BENCHES

Up to: **800 Kg** (1764 lb)
Kg/Shelf
LxPxH: 1200x600x1800 mm



SIMONHOME

Up to: **150 Kg** (331 lb)
Kg/Shelf
LxPxH: 1200x600x1800 mm



TAGUILLAS LOCKER



SIMONTITÁN

NO BOLTS SYSTEM

Up to: **600 Kg** (1323 lb)
Kg/Shelf
LxPxH: 1200x600x1800 mm



SIMONINOX

NO BOLTS SYSTEM

Up to: **400 Kg** (882 lb)
Kg/Shelf
LxPxH: 1200x600x1800 mm

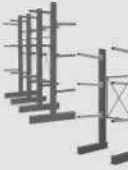


SIMONPALET

Up to: **4500 Kg** (9923 lb)
Kg/Shelf
LxPxH: 1200x600x1800 mm

SIMONLEVER

Up to: **400 Kg** (882 lb)
Kg/Shelf
LxPxH: 1200x600x1800 mm



ALTILLOS Y PASILLOS ELEVADOS PLATFORMS AND MEZZANINES

